



Nashville Ski Club, Inc.
P.O. Box 291592
Nashville, TN 37229-1592

Nashville Ski Club
March 2019

LIFT LINES

Next Membership Meeting — March 5th McNamara's Irish Pub in Donelson

Inside This Issue

March Membership Meeting	1
April Membership Meeting	1
Race Sponsors	2
Park City Trip Report	3
Whistler Trip Information	4
Beaver Creek Trip Information	5
Club Information and Contacts	6

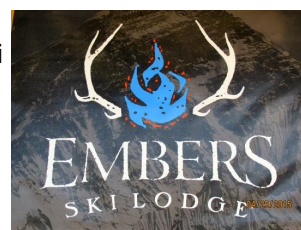
Join us on March 5th (Joe's birthday!) for our first membership meeting of 2019. We'll be preparing for club elections in our April meeting so if you're willing to assist us with club leadership this is an excellent time to offer your services! We'll be back at McNamara's Irish Pub in Donelson for this meeting. Happy hour at 5:30 followed by the meeting at 6 PM. Stick around for dinner too!

[McNamara's Irish Pub](#)
2740 Old Lebanon Rd
Nashville 37214



April Membership Meeting

We'll visit the only ski lodge in town for our April meeting: Embers Ski Lodge in the 12 South district. Located at 2410 12th Ave S, the Embers Ski Lodge brings the warmth and camaraderie of an après-ski lodge to the Nashville Scene. Embers has an innovative cocktail menu and a seasonally influenced gastropub menu. Happy hour is 3-7 with drink specials. We will be gathering for a social time beginning at 5:30 and the club meeting will be at 6:00.



STONE SOUP



BY JAN ELIOT

CSC RACE SERIES SPONSORS OF THE MONTH

The following businesses have donated merchandise and/or certificates to the Crescent Ski Council. Their merchandise and certificates will be used as prizes to the top three finishers in each flight of the CSC Race Series. Please support these establishments and product lines at every possible opportunity.

DYNASTAR



LANGE



www.dynastar.com



www.skibanfflakelouise.com



WINTER PARK

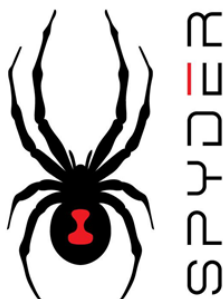
www.winterparkresort.c



www.bananaboat.com



www.polarmax.com



www.spyder.com



www.aspensnowmass.com

Our website has the latest copies of our membership form.

<http://nashvilleskiclub.org/forms.htm>

Park City Trip Report

By Sara Tamas Shamblin

The Nashville Ski Club returned to Park City, Utah, for a week of skiing Feb 9-16, led by Sara Tamas Shamblin and Lea Brosky. The weather was fantastic, not too cold and not too warm, and there was lots of snow. In fact, it had snowed over 250 inches this season by the time we arrived! We had a few perfect bluebird days and a few days where it snowed even more, just adding to our joy on the slopes. Great conditions made for a great trip!

We were joined by new (to us) skiers from Charlotte, New York City and Phoenix. We stayed at the Park Station condos which was a very short walk from the Town Lift and very convenient to Main Street and downtown Park City. These condos have been recently remodeled and were very comfortable. We enjoyed group dinners at Flanagans Irish Restaurant, Buona Vita Italian Restaurant and Grub Steak Steakhouse, plus a pizza party our last day in Park City. The Knoxville and Chattanooga ski clubs were also in Park City that week and we met up with them for a happy hour in the local brewery and for a "dessert tasting" on Feb 14 in Deer Valley. It was great to meet new friends from the same state!

On our "day off" from skiing we toured the Utah Olympic Park where we toured the museum, saw the bobsled/luge/skeleton track and went to the top of the ski jump. That jump sure does look steep from the top! We also saw the training jumps for aerials where they jump into a pool in the summer. Interestingly, we were told that ski jumping is the second safest winter Olympic sport, because the athletes are only 12 feet off the ground! (Curling is the safest.) Bill Jekot took a ride on the bobsled track, starting part of the way down the track, in a bobsled with a professional driver. Ask him about his experience! After the Olympic Park we went to the US Ski Team Center of Excellence and had a tour of their facilities. This is a state-of-the-art facility designed to serve US ski and snowboard athletes and coaches, bringing everyone together under the same roof as one team. The facilities include strength training areas, a gymnasium, ski and snowboard ramps, trampolines, recovery/rehab facilities and a nutrition center. A few athletes were working out while we were there but most are out competing this time of year. A highlight of our visit was getting to meet Picabo Street who came in to talk to us and discuss not only her career but also the importance of this facility to snow sport athletes. It was amazing to meet a living legend and she was so gracious and spent quite some time talking with us.

Our last day on the slopes was a classic ski day: started off with beautiful blue skies and ended up overcast and snowing as we made our way off the slopes and into our rooms, packing up and ready to head home, another wonderful ski trip in the books!

[See more photos on our website!](#)



Whistler, BC — February 23-March 2, 2019

We're going international!!! Ok, so it's not "across the pond" but it is our friendly neighbors to the north.

This trip is SOLD OUT though you may contact the trip leader to be put on the waiting list.

This week-long trip to Whistler, British Columbia, Canada leaves Nashville on February 23rd. Make sure those passports are up to date and [start your trail map musings](#) any day now, as Whistler is a ton of mountain to cover.

Whistler and Blackcomb are combined by the Peak 2 Peak Gondola joining up to make over 8,000 acres of skiable terrain. This is touted to be the largest skiable area in North America, and we're going to make it ours for a full week. The Peak 2 Peak Gondola connects the two areas and holds two world records: one for the longest free span between ropeway towers and another for the highest point from the ground. The latter isn't so much fun for those with a fear of heights. But we chose this sport, right?!!

Dates: February 23 - March 2, 2019 Saturday to Saturday

Lodging: Our stay will be at the Delta Whistler Village Inn and Suites, a Marriott property. We'll have 2 BR/2 BA condos...with robes and slippers! It's located in the Village, just steps from Olympic Plaza and a couple minute walk from the lifts!

Full package: includes 7 nights lodging, round-trip air, 5-day lift tickets, ground transportation, group dinners and socials: \$2277

Land only: includes 7 nights lodging, 5-day lift tickets, ground transportation, group dinners and socials: \$1667

Lift tickets: 6-day options available for additional \$91. Senior discount is available

Trip Leaders: Joe Moreau - 615.513.8121 - joemoreau23@aol.com
Stephanie Fields - 615.243.6555 - stephaniefieldsva@yahoo.com

Please join us! It's going to be an epic adventure!

Passport Requirements

1. **All trip participants MUST have a valid passport.** Passport Cards are NOT valid for international air travel. Instructions for getting/renewing a passport may be found [HERE](#).

2. If you don't yet have **Global Entry**, now is the perfect time to get it! This will ease your return to the US any time you've been out of the country and it includes **TSA PreCheck**. Instructions can be found [HERE](#). **Once you get your Trusted Traveler Number, be sure to add it to all your airline frequent flyer accounts.**

3. If you will have less than six months remaining on your passport at the time you enter Canada, you are encouraged to go ahead and renew it now.



If you have an Epic Mix pass from a previous trip to a Vail-owned resort, bring it along! You can add your photos and stats to the same card.

Beaver Creek, CO — March 16-22, 2019

Join us as we take our annual "Family Trip" this year to Beaver Creek. We will depart Nashville and fly to Denver, Colorado. We will take a motor coach to The Borders Lodge, a Wyndham Vacation property in Beaver Creek. The Borders Lodge offers a unique combination of seclusion and convenience. This elegant ski-in/ski-out property lies just steps from the Elkhorn lift and walking distance to the heart of Beaver Creek Village.

Marrying the comfort of a private residence with the personal service of a fine hotel, The Borders Lodge offers a front desk, daily housekeeping, private underground parking and complimentary on-demand shuttle service. Additional resort amenities include an outdoor heated pool, two hot tubs, private ski lockers and a group meeting room for up to 50 people.

Each accommodation at The Borders Lodge is individually owned, tastefully decorated and amenity filled. Every unit offers complimentary high-speed Internet access, plush robes and Aveda bath amenities. The condominiums also include a full kitchen, washer/dryer, gas fireplace and a private balcony or patio.

The terrain at Beaver Creek is 19% Beginner, 43% Intermediate, and 38% Advanced. From Beaver Creek there is access to Bachelor Gulch and Arrowhead ski areas. Your ticket is also good at Vail, which is just a short bus ride away.

Full package includes: Round trip air, ground transfers, 6 nights lodging, baggage handling, trip socials and parties.

Full Package: \$2168 with 4-day adult lift ticket

Land only: \$1510 (includes ground transportation but without airfare)

Additional pricing options for child lift tickets available

Trip Leader: Kelly Frizzell - kelly.frizzell@gmail.com - 615.969.0231



If you have an Epic Mix pass from a previous trip to a Vail-owned resort, bring it along! You can add your photos and stats to the same card.



We had great fun on last year's families' trip!

Board of Directors Officers

President	Stephanie Fields	stephaniefieldsva@yahoo.com
Vice President	Sara Tamas Shamblin	saratamasdvm@gmail.com
Executive Secretary	Patty Meeks	pattygroom8@hotmail.com
Treasurer	Joe Moreau	joemoreau23@aol.com

Board Members and Committee Chairs

Sheila Armstrong	<i>Board Member</i>	sheilalarmstrong@gmail.com
Kristi Cleary	<i>Board Member</i>	ekcleary@comcast.net
Monica Davis	<i>Board Member</i>	monica-davis@comcast.net
Bess Gormley	<i>Board Member</i>	bessgormley@comcast.net
Tom Gormley	<i>Board Member, Trip Committee Chair</i>	gormley@comcast.net
Judy Hall	<i>Board Member</i>	brant001@comcast.net
Marika McCoy	<i>Board Member</i>	13marika@comcast.net
Harry Ristau	<i>Board Member</i>	hristau@comcast.net
Kim Ristau	<i>Board Member</i>	kimris@comcast.net
Gary Woolfolk	<i>Board Member, Racing Coord, Crescent Rep</i>	garyw1@bellsouth.net
Beverly Sullivan	<i>Facebook</i>	bevz13@bellsouth.net
Lea Brosky	<i>Webmaster, Newsletter & Twitter</i>	leab901@gmail.com

Membership and Club Information

Sign Up for Our Weekly Social Email

Simply send an email to nashville-ski+subscribe@googlegroups.com and you're in! Unsubscribe instructions will be at the bottom of each mail you receive from us. If you're having difficulties, contact Stephanie Fields or Lea Brosky at the email addresses above.

Visit us on the web at <http://www.NashvilleSkiClub.org>

Find us on Facebook



Follow us on Twitter



[@NashvilleSki](https://twitter.com/NashvilleSki)

Is your membership information correct?

If you change your email or mailing address,
be sure to let us know.

Nashville Ski Club, Inc.
ATTN: Membership
P.O. Box 291592
Nashville, TN 37229-1592

info@NashvilleSkiClub.org

The Nashville Ski Club, Inc. (NSC) is a non-profit membership organization promoting snow skiing and snowboarding in the Middle Tennessee area. All trips and events are run by volunteers. Membership is on an annual basis from August 1 to July 31. The cost for new members is \$35 single, and \$55 family memberships and is non-refundable. The NSC is a member of the Crescent Ski Council (CSC), an association of ski clubs located in the southeastern United States. All CSC privileges are extended to NSC members. LIFT LINES is the official newsletter of the Nashville Ski Club, Inc., and is published monthly. Nashville Ski Club, Inc., P.O. Box 291592, Nashville, Tennessee, 37229-1592