



Nashville Ski Club, Inc.  
P.O. Box 291592  
Nashville, TN 37229-1592

Nashville Ski Club  
March 2020

# LIFT LINES

## Next Membership Meeting — March 3<sup>rd</sup> — Cool Springs Brewery

Let's meet other members and new ones at this laid-back brewpub featuring housemade beers, as well as a menu of hearty British & American grub. Happy Hour until 7 pm includes house wines, well drinks and beers. We will meet at the upstairs part of the restaurant overlooking the brewery. As usual we'll meet for drinks at 5:30 followed by a short meeting at 6 PM.

[Cool Springs Brewery](#)  
600A Frazier Dr  
Franklin, TN 37064

### Inside This Issue

March Membership Meeting	1
April Membership Meeting	1
Copper Mountain Trip Report	2
Copper Mountain Photos	3
Après Ski Party	3
Crescent Racing Sponsors	4
Steamboat Trip Info	5
Snowmass Trip Info	6
Club Information and Contacts	7



## April Membership Meeting — April 7th, 6:00 PM

We'll try out a new spot for our April meeting. Nadeen's Hermitage Haven. It's election day so we definitely want a good turn out. Nadeen's calls themselves "your little neighborhood joint" and says this on their website:

*If it's on our menu, we made it. Biscuits to Brussels, Nashville Hot Chicken & Waffles to Philly Cheesesteaks, it's all made to order. That fried pie you ordered wasn't made in the mornin'; it was made for you. The real question: do you want your Philly 'wit or witout onions?'*

Check out their website which includes their menu.  
<https://nadeenshermitagehaven.business.site/>

Nadeen's Hermitage Haven ([map](#))  
3410 Lebanon Pike  
Hermitage, TN 37076



## How Much Fun Did We Have?

We're opening up the photo galleries for each trip as it's in progress. Why wait until the end of the trip to let everyone know what a great time you had? Upload the photos while you're on site! Trip participants will be emailed links for the trips just before each trip leaves Nashville.

## Copper Mountain Trip Report

Copper was a slight departure from our normal trips, in travel being on a Sunday! Luckily, it was very easy travel. Non-stop to Denver, board a coach and hit the road. There were zero travel issues and our North Carolina, Alabama folks met us right on time too!

Check-in and drop-off was a bit different as well, as Copper Mountain owns many different buildings but you check-in all at once. As a note for trip leaders, this is something to be aware of on future trips ~ Copper doesn't operate the way many resorts do. They own it all...the restaurants and bars, and very few are willing to do large dinners.

Copper is definitely a mountain worth going back to though. So much intermediate terrain. Plenty of black diamond also but it's kind of contained on its own area of the mountain. Most of the green runs are consolidated to one area as well. It's not easy to accidentally end up on terrifying terrain! Thank God, for those of us who may be map challenged (that would be me).

Frisco was nearby, so we got to have a lovely evening meal at Greco's Pastaria in Frisco, CO. Copper does have a great local bus system, with frequent trips between Copper, Breck, Frisco and all. There's also Uber and Lyft...but just one or two of each! If you're looking for a good mountain hustle, driving ride-share might be lucrative.

One other evening, we got together in the larger of the condos for a pizza party provided by the ski club. When restaurants won't host you...you improvise!

The first day skiing, Monday 2/3 ended up being quite a spectacular day. Mountains have their own weather and luckily, this one eased us in with great skiing on Monday.

Tuesday, we woke up to nearly 5" of new powder much to "yippees" of POW lovers and "Ah, dang" from those of us that don't love the freshies.

Wednesday began with a thermometer reading of MINUS 21 degrees. We were slightly afraid to go out in that, but by the time most hit the slopes, it was a balmy zero. With sun, it turned out to be an amazing day and no frozen toes. Well, maybe a few but they thawed nicely in the hot tub.

Wednesday night, we all trekked to nearby Frisco and had a good Italian dinner at Greco's Pastaria. They were gracious to host us last minute and ended up being a great evening out, despite the still below freezing temperatures.

And then snowpocalypse hit. Reported to be a historical winter storm, Copper Mountain got over 32" of snow in 2 days. The powder lovers were in heaven. Thursday morning, the snow totals were about 15" and by Friday morning, it was getting really close to that 32". [You've got to check out some pictures of that](#). Joe Moreau knee deep in snow is priceless. (Some photos next page)

Saturday turned out to be BEST DAY EVER. Bluebird skies greeted us and the new powder under our sticks was welcome. Many slopes were groomed, but that didn't hold all the new depths in place. It was second-day powder, so to speak. And as we rolled out of the area, more snow was falling and I later saw that both Breck and Copper had closed some terrain due to avalanche risk. I'd say they're set for snow for a few weeks at least!

A great time seemed to be had by all. We had a couple newcomers to the Joe/Stephanie trip contingent, and a few that we hadn't seen in a few years. There was the crew that often goes on our trips as well. Sadly, one of the favorites of all of us had a terrible fall that resulted in a broken humerus. Not funny at all, we were all devastated for Kim Ristau to be in pain from the broken arm. Sidelined on Wednesday, she still managed to have a great attitude and smiles on the way home. Kudos to Copper Ski Patrol though for getting there in minutes.

That's all for Copper - a mountain we'd recommend visiting. Not as plush as some we've been to in the past, but they have great terrain, easy to navigate village areas and an excellent free transportation system locally and to nearby towns.

### Après Ski Party — Saturday, March 28 — 6 PM

Please join us for the 2020 Après Ski party to celebrate four great trips this season, to discuss trips for next year and to have fun. The party will be from 6 to 10 pm on Saturday, March 28 at [Old Natchez Country Club](#). The address is 115 Gardengate Dr, Franklin, TN 37069. To RSVP use the Event Calendar on the website.

We will have a buffet dinner, dancing, a cash bar and games. For those lucky ones who went on one of the ski trips this year, there is no cost for this event. For members who did not attend a 2020 ski trip the cost is \$40 and for guests the cost is \$50. Please join us to see old friends and meet new ones. Bring a guest to introduce them to the great people and fun trips with the Nashville Ski Club!!



### Copper Mountain Trip Photos

This is just a small sample of the photos that can be found on our website!



**CSC RACE SERIES SPONSORS OF THE MONTH**

The following businesses have donated merchandise and/or certificates to the Crescent Ski Council. Their merchandise and certificates will be used as prizes to the top three finishers in each flight of the CSC Race Series. Please support these establishments and product lines at every possible opportunity.



<https://peakperformancecamp.com/>



[www.millerlite.com](http://www.millerlite.com)



[www.descente.com](http://www.descente.com)



[www.sportsamerica.com](http://www.sportsamerica.com)



[www.dominatorwax.com](http://www.dominatorwax.com)



[www.leki.com](http://www.leki.com)



[www.mammothmountain.com](http://www.mammothmountain.com)



[www.meadowbrook-inn.com](http://www.meadowbrook-inn.com)



[www.point6.com](http://www.point6.com)



[www.valleydistributing.com](http://www.valleydistributing.com)



## Steamboat, CO — February 29 - March 7, 2020

We are returning to one of the most popular resorts in the United States, Steamboat! Steamboat has been dubbed "Ski Town USA" because it is home to so many Olympic athletes. Steamboat is also famous for its Champagne Powder®, lots of wonderful fluffy powdery snow!

The second largest ski area in Colorado, Steamboat is also known for having one of the best ski schools in the country, and plenty of green and blue runs. If there are any beginner skiers out there, this is the trip for you! For the seasoned skier, you will have no trouble finding many challenging runs. Steamboat boasts 18 lifts, 169 trails and 2965 skiable acres. The longest run is over 3 miles! The terrain consists of 14% beginner runs, 42% intermediate and 44% expert slopes. Something for everyone!

We will be staying at the Torian Plum condos, a ski-in/ski-out property located at the base of the ski area. Each unit is 2 bedroom/2 bath and has a fireplace, housekeeping, private shuttle, indoor and outdoor hot tubs, a fitness center, in-unit washer, ski lockers and of course, free wifi. It is in the same plaza as several restaurants and our ski rental company. Pricing is based upon 4 people per unit, 2 people per bedroom. The condos will have a single bed in the master bedroom and either one large bed or two smaller ones in the second bedroom. We will also have one 3 bedroom/2 bathroom condo, perfect for 6 friends! When assigning rooms, couples will be put into the "master" bedroom and same sex persons into the second bedroom.

The full package includes roundtrip airfare into Hayden, CO, a short drive from town, 7 nights lodging, round trip ground transportation, group dinners and socials. The land-only package excludes the air transportation.

**Dates:** Feb 29 – Mar 6, 2020 Saturday to Saturday

**Lodging:** Torian Plum Condos

32 available spots available with possible expansion

**Full package:** includes 7 nights lodging, round trip air, ground transportation, luggage handling, group dinners and socials:

**\$2358** with 5-day lifts - **\$1955** without lifts

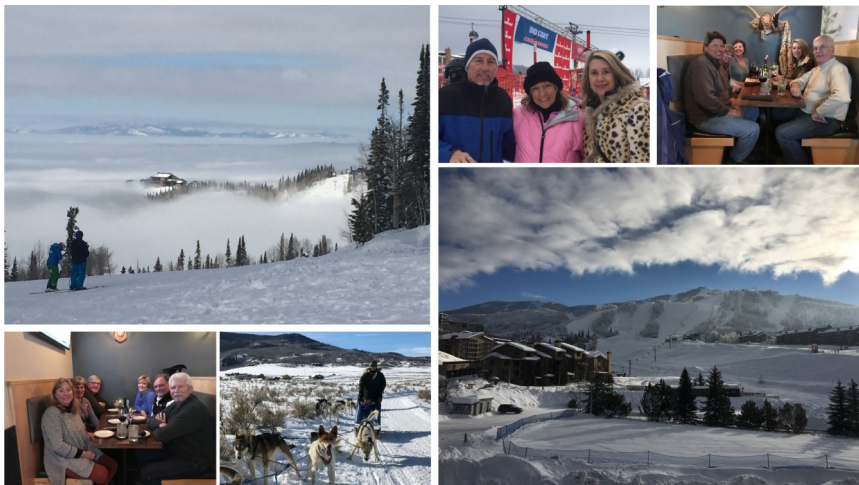
other lift packages available on the SportsAmerica site, including Ikon Pass

**Land only:** includes 7 nights lodging, ground transportation, group dinners and socials: **\$1550** (without lift tickets)

### Trip Leaders:

Sara Tamas Shamblin - 615.838.3360 - [saratamasdvm@gmail.com](mailto:saratamasdvm@gmail.com)

Lea Brosky - 901.412.9945 - [leab901@gmail.com](mailto:leab901@gmail.com)



**Steamboat**



We had a blast on  
this 2017 trip to  
Steamboat!

## Snowmass, CO — March 14-21, 2019

We'll wrap up the 2019-2020 ski season with our Families' Trip to Snowmass, Colorado! While we welcome everyone, we're especially encouraging families with children to attend this trip as it will occur during many schools' spring break.

We'll be back at Top of the Village condos, a ski-in/ski-out lodge that is located near the base of Snowmass, next to the lifts and restaurants. Most of our condos are 2-bedroom/2-bath but there are some 3-bedroom condos available.

We will be flying into Aspen and from there it's only a 15-minute ride to the Top of the Village condos. As usual we'll work with Black Tie Ski Rentals to have our equipment brought to us.

**Full package including 5-of-6 days lift tickets: \$2337**

**Land-only including 5-of-6 days lift tickets: \$1595**

Other lift ticket options including Ikon Passes are available when checking out through the SportsAmerica website.

Lift tickets are good at all four area resorts: Aspen Mountain, Snowmass, Buttermilk and Aspen Highlands.

We will have a great time! There are 32 lodging spots reserved and 32 air spots reserved. While there is a possibility we will be able to expand, we'd have to do so early because Top of the Village sells out quickly since it is so popular.

**Trip Leader:** Kelly Frizzell - [kelly.frizzell@gmail.com](mailto:kelly.frizzell@gmail.com) - 615.969.0231



We had great fun on last year's families' trip!

## Board of Directors Officers

President	Stephanie Fields	<a href="mailto:stephaniefieldsva@yahoo.com">stephaniefieldsva@yahoo.com</a>
Vice President	Sara Tamas Shamblin	<a href="mailto:saratamasdvm@gmail.com">saratamasdvm@gmail.com</a>
Executive Secretary	Patty Meeks	<a href="mailto:pattygroom8@hotmail.com">pattygroom8@hotmail.com</a>
Treasurer	Joe Moreau	<a href="mailto:joemoreau23@aol.com">joemoreau23@aol.com</a>

### Board Members and Committee Chairs

<b>Sheila Armstrong</b>	<i>Board Member</i>	<a href="mailto:sheilalarmstrong@gmail.com">sheilalarmstrong@gmail.com</a>
<b>Mary Buckner</b>	<i>Board Member</i>	<a href="mailto:tnmaryb@gmail.com">tnmaryb@gmail.com</a>
<b>Kristi Cleary</b>	<i>Board Member</i>	<a href="mailto:ekcleary@comcast.net">ekcleary@comcast.net</a>
<b>Monica Davis</b>	<i>Board Member</i>	<a href="mailto:monica-davis@comcast.net">monica-davis@comcast.net</a>
<b>Bess Gormley</b>	<i>Board Member</i>	<a href="mailto:bessgormley@comcast.net">bessgormley@comcast.net</a>
<b>Tom Gormley</b>	<i>Board Member, Trip Committee Chair</i>	<a href="mailto:gormley@comcast.net">gormley@comcast.net</a>
<b>Judy Hall</b>	<i>Board Member</i>	<a href="mailto:brant001@comcast.net">brant001@comcast.net</a>
<b>Marika McCoy</b>	<i>Board Member</i>	<a href="mailto:13marika@comcast.net">13marika@comcast.net</a>
<b>Patty Meeks</b>	<i>Board Member</i>	<a href="mailto:pattygroom8@hotmail.com">pattygroom8@hotmail.com</a>
<b>Harry Ristau</b>	<i>Board Member</i>	<a href="mailto:hristau@comcast.net">hristau@comcast.net</a>
<b>Kim Ristau</b>	<i>Board Member</i>	<a href="mailto:kimris@comcast.net">kimris@comcast.net</a>
<b>Peter Tuttle</b>	<i>Board Member</i>	<a href="mailto:p.tuttle@peteruttile.com">p.tuttle@peteruttile.com</a>
<b>Gary Woolfolk</b>	<i>Board Member, Racing Coord, Crescent Rep</i>	<a href="mailto:garyw1@bellsouth.net">garyw1@bellsouth.net</a>
<b>Beverly Sullivan</b>	<i>Facebook</i>	<a href="mailto:bevz13@bellsouth.net">bevz13@bellsouth.net</a>
<b>Lea Brosky</b>	<i>Webmaster, Newsletter &amp; Twitter</i>	<a href="mailto:leab901@gmail.com">leab901@gmail.com</a>

## Sign Up for Our Weekly Social Email

Simply send an email to [nashville-ski+subscribe@googlegroups.com](mailto:nashville-ski+subscribe@googlegroups.com), follow the instructions once you receive a reply and you're in! Unsubscribe instructions will be at the bottom of each mail you receive from us. If you're having difficulties, contact Stephanie Fields or Lea Brosky at the email addresses above.

Visit us on the web at <http://www.NashvilleSkiClub.org>

Find us on Facebook



Follow us on Twitter



[@NashvilleSki](https://twitter.com/NashvilleSki)

### Is your membership information correct?

If you change your email or mailing address,  
be sure to let us know.

Nashville Ski Club, Inc.  
ATTN: Membership  
P.O. Box 291592  
Nashville, TN 37229-1592

[info@NashvilleSkiClub.org](mailto:info@NashvilleSkiClub.org)

# Membership and Club Information

The Nashville Ski Club, Inc. (NSC) is a non-profit membership organization promoting snow skiing and snowboarding in the Middle Tennessee area. All trips and events are run by volunteers. Membership is on an annual basis from August 1 to July 31. The cost for new members is \$35 single, and \$55 family memberships and is non-refundable. The NSC is a member of the Crescent Ski Council (CSC), an association of ski clubs located in the southeastern United States. All CSC privileges are extended to NSC members. LIFT LINES is the official newsletter of the Nashville Ski Club, Inc., and is published monthly. Nashville Ski Club, Inc., P.O. Box 291592, Nashville, Tennessee, 37229-1592